



NUT AND RAISIN LOAF

US

CODE : 60NORA	GTIN : 10831604007150	REVISION 12 (15-01-2020)
WEIGHT : 330 g / 11.6 oz	BAKING : BAKED	UNIT/CASE : 18

INGREDIENTS LIST

Unbleached enriched flour (wheat flour, niacin, reduced iron, thiamin mononitrate, riboflavin, folic acid), water, walnuts, currants, sea salt, yeast, malted barley flour, malted wheat flour, ascorbic acid, foods enzymes (xylanase, glucose-oxdase, lipase, alpha-amylase).

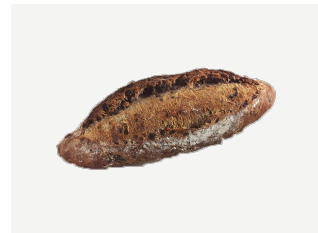
GMO

THIS PRODUCT WAS MADE FROM FOOD THAT HAS NOT BEEN KNOWINGLY OR INTENTIONALLY PRODUCED WITH GENETIC ENGINEERING

DELIVERED PRODUCT



BAKED PRODUCT



ALLERGENS

Contains: Wheat, Walnuts. May contain: Other tree nuts, Soy.



PHYSICAL PRODUCT SPECIFICATIONS

	LENGTH			HEIGHT			WIDTH/DIAMETER			UNIT WEIGHT	
	min	target	max	min	target	max	min	target	max	frozen	cooked
IN	9.65	10.24	10.83	2.17	2.56	2.95	3.35	3.94	4.53	11.6 oz	11.6 oz
CM	24.5	26	27.5	5.5	6.5	7.5	8.5	10	11.5	330 g	330 g

SCARIFICATION SHAPE : STRAIGHT

QUANTITY OF SCARIFICATIONS : 1

STORAGE

Shelf life cooked product : 1 day(s)

Location shelf life cooked product : AMBIENT AIR

Freezer shelf life :365 day(s)

Recommended shelf conditions cooked product :

Store at room temperature 68-78°F (20-25 °C) in a closed packaging avoiding humidity absorption.

Freezing recommendations :

Store in original packaging at stable recommended storage conditions.

Storage temperature of freezer :

Maintained freezer temperature between 10 °F and -12 °F (-12 °C and -24 °C).

Nutrition Facts

6 servings per container

Serving size **1/6 bread (55g)**

Amount per serving

Calories 170

% Daily Value*

Total Fat 5g 6%

Saturated Fat 0g **0%**

Trans Fat 0g

Cholesterol 0mg 0%

Sodium 230mg 10%

Total Carbohydrate 28g 10%

Dietary Fiber 2g **7%**

Total Sugars 5g

Includes 0g Added Sugars **0%**

Protein 5g

Vitamin D 0mcg **0%**

Calcium 20mg **2%**

Iron 2mg **10%**

Potassium 137mg **2%**

*The % Daily Value tells you how much a nutrient in a serving of food contributes to a daily diet. 2,000 calories a day is used for general nutrition advice.

Calories per gram:

Fat 9 • Carbohydrate 4 • Protein 4

COOKING SPECIFICATIONS

BAKING INSTRUCTIONS		PRODUCT DESCRIPTION
THAWING	WHERE	NOT REQUIRED
	TIME	
	TEMPERATURE	
PROOFING	HUMIDITY	NOT REQUIRED
	TIME	NOT REQUIRED
	TEMPERATURE	
BAKING	OVEN TYPE	CONVECTION
	TIME	4-5 MIN
	TEMPERATURE	205°C (401°F)
PRECAUTIONS		COOKING MAY VARY ACCORDING TO OVEN MODEL